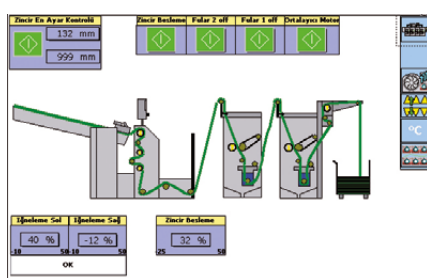


Compact touch screen controller for compact continuous machines



Detail view

The Sedomat 2800+ is suited for the automation of compact continuous machines like calenders, steamers, winding machines, dryers (e.g. relax, yarn, IR), cold-pad-batch, etc. Machines with up to 40 process parameters can be controlled.

Now being water-proof to IP67, it guarantees high quality and reliability for rugged environments. Having RFID support, it offers new possibilities in data acquisition.

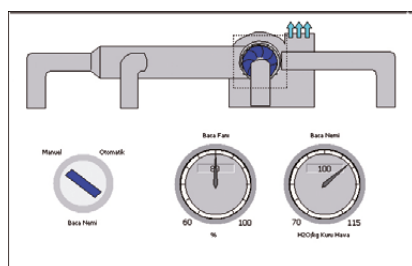
The powerful touch screen operation concept allows an easy operation. An external PLC is not required because the Sedomat 2800+ is equipped with an integrated high-performance soft-PLC. External devices can be connected using the internal I/O's or external I/O's, connected via Profibus. The Ethernet interface enables an integration into the standard TCP/IP network.

The Sedomat 2800+ can be used as a flexible data acquisition terminal expanded by a barcode or mobile wireless laser scanner. The collected data can be used for management reports in SedoMaster or within the ERP solution.

Basic control for continuous finishing

Applications and concept:

- The Sedomat 2800+ controls continuous machines with up to 40 process parameters such as singeing machines, relax dryers, continuous dyeing machines, calenders, raising and emery machines, etc.
- Control of speed, residual moisture, exhaust air humidity, fabric temperature, dwell time, shrinking and stretching, pH, fabric width, etc...
- The next batch can be prepared, while the current batch is still active.
- Ethernet TCP/IP network: link to SedoMaster and communication with other systems.
- Integration with chemical dispensing and automation of dye kitchen.
- Storage of a virtually unlimited number of recipes programs.
- Logging of recipe parameters, alarms, etc. Visualization of process information on Sedomat 2800+ or on a remote PC.
- Support of different languages and character sets, e.g. Chinese.
- Can be used as data acquisition terminal.



Detail view on fans

Applications and concept:

- Internet technology (integrated web server): for remote access from any PC in the plant network.
- PC based: built around a high performance state of the art PC-CPU board.
- Color touch screen: intuitive user interface, easily adopted by operators. Any recipe parameter (heating, fixation time, etc.) can be activated by just touching this parameter on the screen. Push buttons on screen replace push buttons on panel.
- OPC: OLE for Process Control: integration with supervisory systems.
- Windows CE: robust operating system tailored for industrial applications.
- USB interface: for inexpensive devices like memory keys, (copy/save programs) and other PC peripherals.
- Data logging via cloud services.
- RFID support for e.g. operator logon/logoff.
- Options:
 - Barcode reader for tracking purposes
 - USB memory stick
 - USB Interface extension with panel wall connection
 - Touch screen stylus

Specifications:

Display:
6,4" TFT, color, 640 x 480 pixels, touchscreen

Internal I/O (max.):
48 digital inputs,
48 digital outputs,
4 PT 100 inputs,
4 analogue inputs 0-20mA,
8 analogue outputs 0-20mA,
4 fast counter inputs

External I/O:
SedoIO-P, Profi 16/Profi 32 module
connection via Profibus DP

Interfaces:
RS232 for PC programming tools,
Ethernet: link to SedoMaster and other network systems, 2x USB for memory key and other PC peripherals

Power supply: 24V DC, 2,0 A

Ambient temperature:
0 - 50°C (32 - 122°F)

Dimensions:
258,5 x 216 x 155 mm (w x h x d)

Panel cut out:
243 x 199 (w x h) ± 1mm

Head office:

Sedo Treepoint GmbH, Germany

Neuwies 1, D-35794 Mengerskirchen

Phone: + 49 6476 31-0, Fax: +49 6476 31-31

sedo@sedo-treepoint.com

Sedo Treepoint, Switzerland

Phone: + 41 43 488 11 88, Fax: +41 43 488 11 89

switzerland@sedo-treepoint.com

Sedo Treepoint, Belgium

belgium@sedo-treepoint.com

Sedo Treepoint, Brazil

brazil@sedo-treepoint.com

Sedo Treepoint, China

china@sedo-treepoint.com

Sedo Treepoint, India

india@sedo-treepoint.com

Sedo Treepoint, Italy

italy@sedo-treepoint.com

Sedo Treepoint, Singapore

singapore@sedo-treepoint.com

Sedo Treepoint, USA

usa@sedo-treepoint.com

Technical specifications are subject to change without prior notice.