

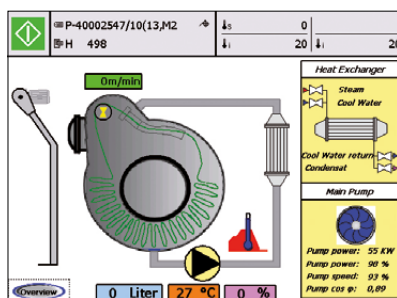


Compact touch screen controller with modular I/O



FILLING WATER 1	FILL STOCK % WATER 1	PUMP >	0.0
HEAT/COOL	50	INJECT EXP.	
HEAT/COOL	75	MIXING EXP.	1.0
OPERATORCALL	OPERATORCALL	OPERATORCALL	
DRAINING	2.0		

Program view



Jet machine

The new Sedomat 2500+ gives a better user experience by offering a modern design and user-friendly interface. Now being water-proof to IP67, it guarantees high quality and reliability for rugged environments. Having RFID support, it offers new possibilities in data acquisition.

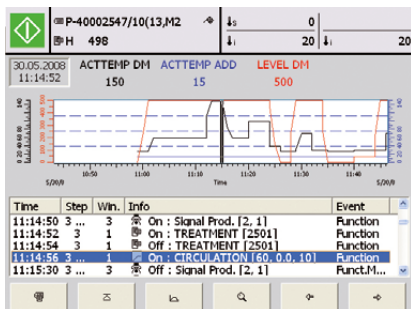
Dye process control has never been easier than with the compact Sedomat 2500+. This instrument combines a friendly color touch screen interface with internet technology, USB connectivity, and many other cutting edge features.

Running on the Windows CE operating systems, it is the ideal choice for an industrial environment. The onboard modular I/O of the Sedomat 2500+ can be configured to exactly meet the requirements of yarn, fabric, or other types of dyeing machines with varying levels of complexity.

Open connectivity - standard protocols

Applications:

- By simultaneously executing two batches and several functions, the next batch can be prepared, while the current batch is still active.
- Connection to the SedoMaster central management system.
- Integration with chemical dispensing and automation of dye kitchen.
- Master/slave-operation.
- Storage of a virtually unlimited number of dyeing programs.
- Logging of temperature curve, functions, alarms, etc. Visualization of process information on Sedomat 2500+ or on a remote PC.
- Support of different languages and character sets, e.g. Chinese.
- Linear, progressive and degressive dosing curves.
- Control of temperature, speed, pH, flow, pressure, etc.
- Data logging via cloud services.
- RFID support for e.g. operator logon/logoff.



Logging view



Connectors and interfaces

Concept:

- 1 controller for all dye machines. The configurable internal I/O matches the requirements of different types of dyeing machines.
- PC based: built around a high performance state of the art PC-CPU board.
- Color touch screen: intuitive user interface, easily adopted by operators. Any function (heating, filling, etc.) can be activated by just touching this function on the screen. Push buttons on screen replace push buttons on panel.
- USB interface: for inexpensive devices like memory keys, (copy/save programs) and other PC peripherals.
- Internet technology (integrated web server): for remote access from any PC in the plant network.
- Windows CE: robust operating system tailored for industrial applications.
- Ethernet TCP/IP network: link to SedoMaster and communication with other dye house systems.
- Profibus DP interface: to link remote I/O modules (e. g. SedoIO-P, Profi 16 and Profi 32), invertors, etc.
- OPC: OLE for Process Control: integration with supervisory systems.
- Internal PLC and PC programming tools for 100% adaptation to the features of your dyeing machine.
- Can be used as data acquisition terminal.
- Options:
 - Barcode reader for tracking purposes
 - USB memory stick
 - USB Interface extension with panel wall connection
 - Touch screen stylus

Specifications:

Display:

6,4" TFT, color, 640 x 480 pixels, touchscreen

Internal I/O (max.):

48 digital inputs,
48 digital outputs,
4 PT 100 inputs,
4 analogue inputs 0-20mA,
8 analogue outputs 0-20mA,
4 fast counter inputs

External I/O (option):

SedoIO-P, Profi 16/Profi 32 module connection via Profibus DP

Interfaces:

RS232 for PC programming tools, Ethernet: link to SedoMaster and other network systems, USB for memory key and other PC peripherals

Power supply: 24V DC, 2,0 A

Ambient temperature:

0 - 50°C (32 - 122°F)

Dimensions:

258,5 x 216 x 155 mm (w x h x d)

Panel cut out:

243 x 199 (w x h) ± 1mm

Head office:

Sedo Treepoint GmbH, Germany

Neuwies 1, D-35794 Mengerskirchen

Phone: + 49 6476 31-0, Fax: +49 6476 31-31

sedo@sedo-treepoint.com

Sedo Treepoint, Switzerland

Phone: + 41 43 488 11 88, Fax: +41 43 488 11 89

switzerland@sedo-treepoint.com

Sedo Treepoint, Belgium

belgium@sedo-treepoint.com

Sedo Treepoint, Brazil

brazil@sedo-treepoint.com

Sedo Treepoint, China

china@sedo-treepoint.com

Sedo Treepoint, India

india@sedo-treepoint.com

Sedo Treepoint, Italy

italy@sedo-treepoint.com

Sedo Treepoint, Singapore

singapore@sedo-treepoint.com

Sedo Treepoint, USA

usa@sedo-treepoint.com

Technical specifications are subject to change without prior notice.