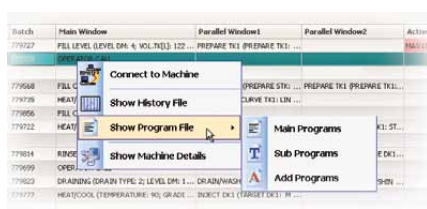
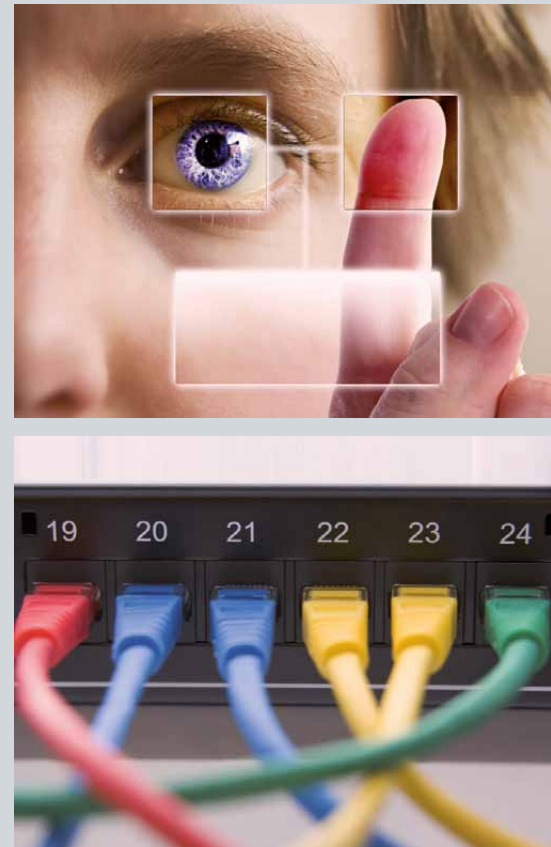


Entry-level system for central process control

Machine	Batch Status	Program State	Batch	Main Window	Parallel Window1	Parallel Window2	Active Alarm	Operator Call
1	Batch Started	🟢	779727	FILL LEVEL (LEVEL.DM: 4; VOL.TK[1]) 122 ...	PREPARE TK1 (PREPARE TK1: ...		MAX LEVEL	
2	Batch Started	🟢	779728	OPERATOR CALL				LOAD MACHINE
3	Batch Empty	🔴						
4	Batch Started	🟢	779568	FILL COUNTER (WATERQUANTITY: 115; ...	PREPARE STK (PREPARE STK: ...	PREPARE TK1 (PREPARE TK1: ...		
5	Batch Started	🟢	779735	HEAT/COOL (TEMPERATURE: 110; GRAD ...	DOSING TK1 (CURVE TK1: LIN ...			
6	Batch Started	🟢	779856	FILL COUNTER (WATERQUANTITY: 150; ...				
7	Batch Started	🟢	779722	HEAT/COOL (TEMPERATURE: 75; GRAD ...		INJECT TK2 (TARGET TK1: ST...		
8	Batch Empty	🔴						
9	Batch Started	🟢	779814	R.INSE TIME (HOLD TIME: 20; WATER TY ...	PREPARE TK1 (PREPARE TK1: ...	PREPARE DK1 (PREPARE DK1...		
10	Batch Started	🟢	779699	OPERATOR CALL				LOAD MACHINE
11	Batch Started	🟢	779823	DRAINING (DRAINTYPE: 2; LEVEL.DM: 1 ...	DRAIN/WASH STK (WASHING ...	DRAIN/WASH TK1 (WASHIN ...		
12	Batch Started	🟢	779777	HEAT/COOL (TEMPERATURE: 100; GRAD ...	DRAINING (DRAINTYPE: 2; LEVEL.DM: 1000 ...	INJECT DK1 (TARGET DK1: M ...		
13	Batch Empty	🔴						
14	Batch Started	🟢	779824	HEAT/COOL (TEMPERATURE: 50; GRAD ...				



Right-click machine for more options



Monitoring view

SedoMonitor is an entry level system for monitoring, administering, supervising and controlling machines equipped with Sedomat touch screen controllers from your desk.

SedoMonitor will simplify your work. At a glance you will get an overview of all machines with details like batch status, program state, active batch, active functions, alarms and operator calls. You can sort/group by different criteria, view multiple alarms or show additional information in tool tips. Consult your history data including trend graph and all details. View or edit processes, treatments and additional programs. At the push of a button you can print this information, export it to different formats (e.g. PDF, Excel, ...) or send it by Email.

SedoMonitor supports backup of process and history files for future reference and ISO 900x certification. From your desk you can work remotely on the Sedomat controllers as though you were in front of the machine e.g. start/stop/change programs, confirm alarms and operator calls, etc.

Improve your workflow

Program Print

Program Data
 Program Number: 1290
 Shop Name: REACTIVE
 Comment: DYING

Step	Window	Window2	Window3	Window4
1	CIRCULATION[00.10.10]	PUMP/COLDR[00.10]	Start Prod. [0.1]	Start Prod. [0.1]
2			Check Prod. [0]	
3			Check Prod. [0]	
4			Check Prod. [0]	
5	CIRCULATION[00.10.10]		Check Prod. [0]	
6			Check Prod. [0]	
7			Check Prod. [0]	
8	CIRCULATION[00.10.10]			
9	DRAINING[DRAIN.1.10]			
10	PROG RETURN[0]			

Program printout

Batch Logging Print

Batch Data:
 Batch: 793201
 Production Id: 793174
 Program Number: 20001
 Start Time: 27.01.2010 01:16
 End Time: 27.01.2010 02:03

Graph: ACTUEW DH, SETUEW DH, LEVEL TK.1, FLOW 16

Batch Text:
 ARTICLE: 79002
 BATCH: 12940
 CUSTOMER:

Batch Parameter:
 LOAD 3RD: 0
 LIQUOR RATIO: 8
 WASTE SWP: COND (20%)
 RED VOLUME: 6
 LOAD 3RD 1: 90.0

Event Logging:
 Date: 27.01.2010 Page 1 of 7

Logging printout

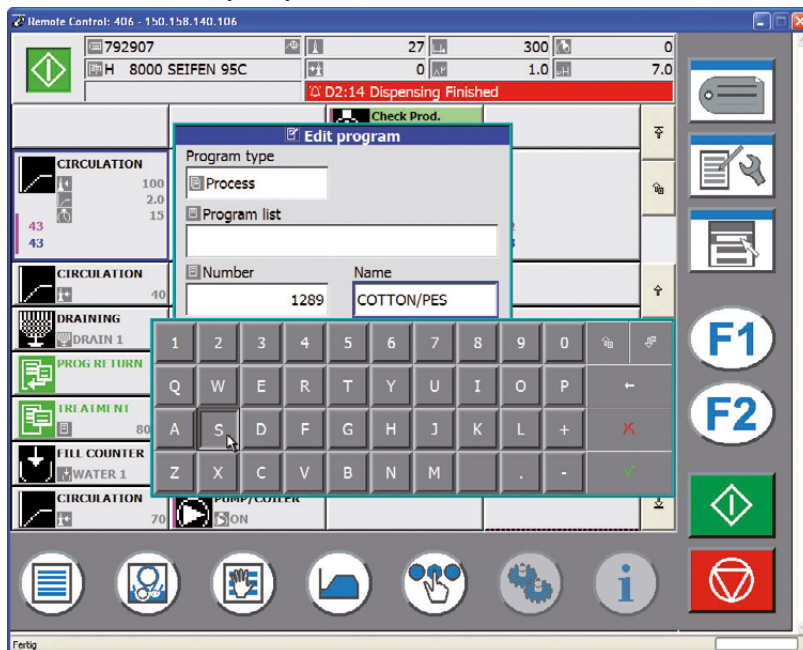
Features:

- Real time status view: Machine status, active functions, alarms and operator calls.
- Full remote control of connected Sedomat controllers, e.g. change functions, view/cancel alarms, start/stop/halt program, etc.
- Edit programs.
- For security reasons a backup of programs is possible.
- Automatic backup of history data via FTP (needed for ISO900x certification).
- Printout of history data.
- Printout of programs.
- Copy programs from and to controllers.
- Show machine details (machine number, IP-address, controller type, software version, etc.)

Benefits:

- Self-explaining, easy to use and to install.
- All information available at your desk. Operate and control your machine without leaving your office.
- Distribute programs via Ethernet to different machines.
- Can be used for all Sedomat touch screen controllers.
- Automatic backup of history data via FTP.
- Scalable: can be used for one to an unlimited number of machines.
- Remote service and diagnostics can be carried out.
- No separate workstation or server needed.

Work remotely with your Sedomat:



Head office:
Sedo Treepoint GmbH, Germany
 Neuwies 1, D-35794 Mengerskirchen
 Phone: + 49 6476 31-0, Fax: +49 6476 31-31
 sedo@sedo-treepoint.com

Sedo Treepoint, Switzerland
 Phone: + 41 43 488 11 88, Fax: +41 43 488 11 89
 switzerland@sedo-treepoint.com

Sedo Treepoint, Belgium
 belgium@sedo-treepoint.com

Sedo Treepoint, Brazil
 brazil@sedo-treepoint.com

Sedo Treepoint, China
 china@sedo-treepoint.com

Sedo Treepoint, India
 india@sedo-treepoint.com

Sedo Treepoint, Italy
 italy@sedo-treepoint.com

Sedo Treepoint, Singapore
 singapore@sedo-treepoint.com

Sedo Treepoint, USA
 usa@sedo-treepoint.com

Technical specifications are subject to change without prior notice.