

## Flexible touch screen controller with modular I/O



FILLING WATER 1	FILL STOCK % WATER 1	PUMP> 0.0
HEAT/COOL 50 0.0 0.0		U2 INJECT EXP.
HEAT/COOL 75		U2 MIXING EXP. 1.0
	U2 INJECT STOCK	U2 INJECT EXP.
OPERATORCALL SAMPLE	OPERATORCALL SAMPLE	OPERATORCALL SAMPLE
DRAINING 2.0		

Program view



RFID and barcode support

The new Sedomat 2600+ gives a better user experience by offering a modern design and user-friendly interface. Now being water-proof to IP67, it guarantees high quality and reliability for rugged environments. Having RFID support, it offers new possibilities in data acquisition.

Dye process control has never been easier than with the compact Sedomat 2600+. This instrument combines a big 8.4" color touch screen interface with internet technology, USB connectivity, and many other cutting edge features.

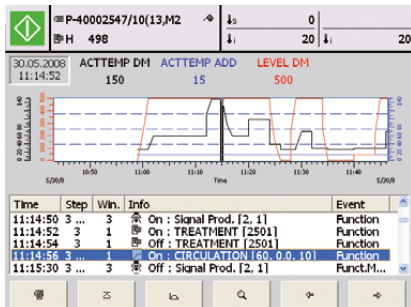
Included is a dye program management system, data logging and visualization system. The machine adaptation can be easily made with the integrated PLC.

The onboard modular I/O of the Sedomat 2600+ can be configured to exactly meet the requirements of yarn, fabric, or other types of dyeing machines with varying levels of complexity.

## Open connectivity - standard protocols

### Applications:

- By simultaneously executing two batches and several functions, the next batch can be prepared, while the current batch is still active.
- Connection to the SedoMaster central management system.
- Integration with chemical dispensing and automation of dye kitchen.
- Master/slave-operation.
- Storage of a virtually unlimited number of dyeing programs.
- Logging of temperature curve, functions, alarms, etc. Visualization of process information on Sedomat 2600+ or on a remote PC.
- Support of different languages and character sets, e.g. Chinese.
- Linear, progressive and degressive dosing curves.
- Control of temperature, speed, pH, flow, pressure, etc.
- Data logging via cloud services.
- RFID support for e.g. operator logon/logoff.



Logging view



Connectors and interfaces

### Concept:

- 1 controller for all dye machines. The configurable internal I/O matches the requirements of different types of dyeing machines.
- PC based: built around a high performance state of the art PC-CPU board.
- Color touch screen: intuitive user interface, easily adopted by operators. Any function (heating, filling, etc.) can be activated by just touching this function on the screen. Push buttons on screen replace push buttons on panel.
- USB interface: for inexpensive devices like memory keys, (copy/save programs) and other PC peripherals.
- Internet technology (integrated web server): for remote access from any PC in the plant network.
- Windows CE: robust operating system tailored for industrial applications.
- Ethernet TCP/IP network: link to SedoMaster and communication with other dye house systems.
- Profibus DP interface: to link remote I/O modules (e. g. SedoIO-P, Profi 16 and Profi 32), invertors, etc.
- OPC: OLE for Process Control: integration with supervisory systems.
- Internal PLC and PC programming tools for 100% adaptation to the features of your dyeing machine.
- Can be used as data acquisition terminal.
- Options:
  - Barcode reader for tracking purposes
  - USB memory stick
  - USB Interface extension with panel wall connection
  - Touch screen stylus

### Specifications:

#### Display:

8,4" TFT, color, 640 x 480 pixels, touchscreen

#### Internal I/O (max.):

48 digital inputs,  
48 digital outputs,  
4 PT 100 inputs,  
4 analogue inputs 0-20mA,  
8 analogue outputs 0-20mA,  
4 fast counter inputs

#### External I/O (option):

SedoIO-P, Profi 16/Profi 32 module  
connection via Profibus DP

#### Interfaces:

RS232 for PC programming tools,  
Ethernet: link to SedoMaster and other network systems, USB for memory key and other PC peripherals

Power supply: 24V DC, 2,0 A

#### Ambient temperature:

0 - 50°C (32 - 122°F)

#### Dimensions:

258,5 x 216 x 155 mm (w x h x d)

#### Panel cut out:

243 x 199 (w x h) ± 1mm

Head office:

**Sedo Treepoint GmbH, Germany**

Neuwies 1, D-35794 Mengerskirchen

Phone: + 49 6476 31-0, Fax: +49 6476 31-31

sedo@sedo-treepoint.com

Sedo Treepoint, Switzerland

Phone: + 41 43 488 11 88, Fax: +41 43 488 11 89

switzerland@sedo-treepoint.com

Sedo Treepoint, Belgium

belgium@sedo-treepoint.com

Sedo Treepoint, Brazil

brazil@sedo-treepoint.com

Sedo Treepoint, China

china@sedo-treepoint.com

Sedo Treepoint, India

india@sedo-treepoint.com

Sedo Treepoint, Italy

italy@sedo-treepoint.com

Sedo Treepoint, Singapore

singapore@sedo-treepoint.com

Sedo Treepoint, USA

usa@sedo-treepoint.com

Technical specifications are subject to change without prior notice.